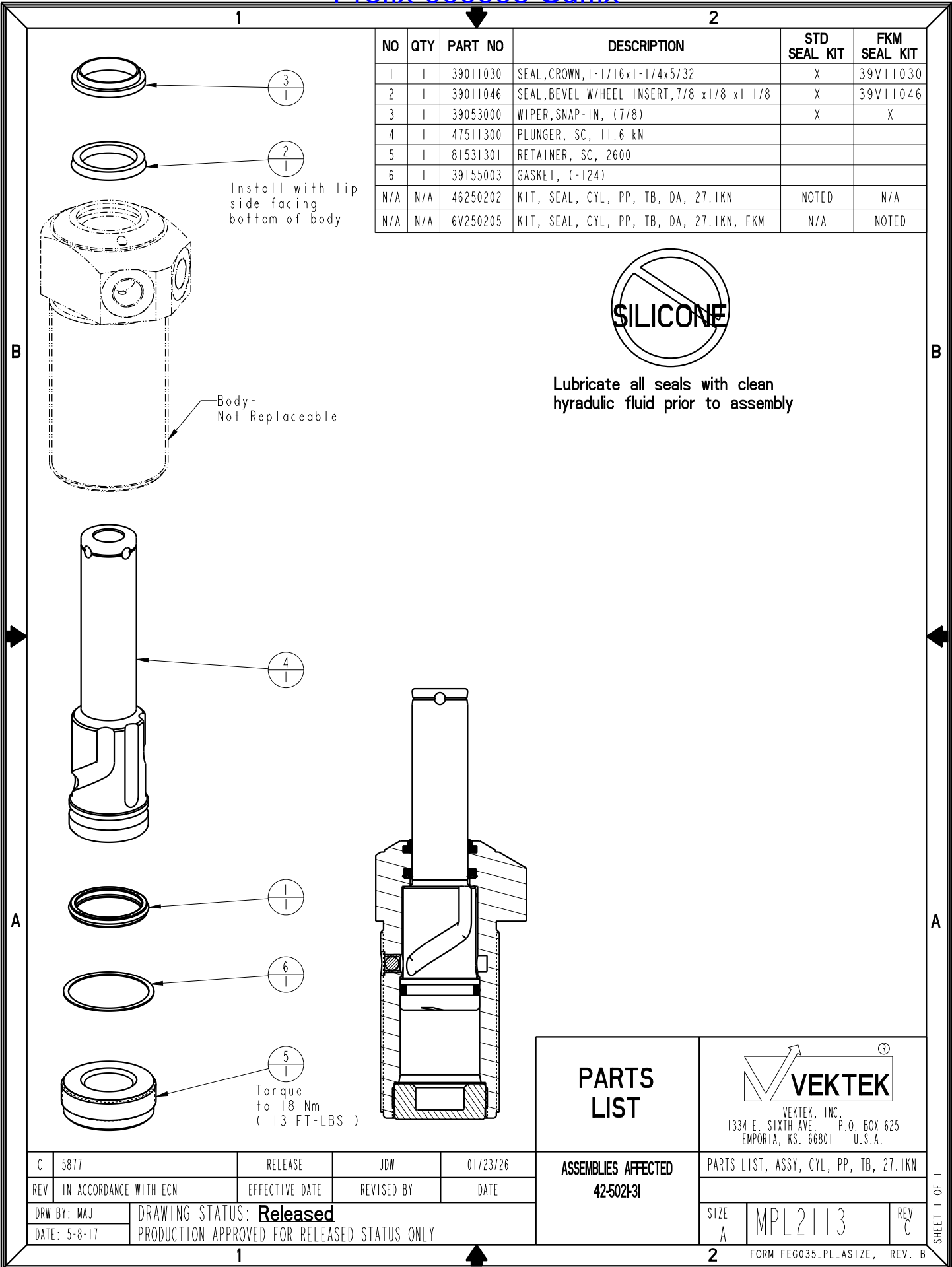


Prefix-000006-Suffix



NO	QTY	PART NO	DESCRIPTION	STD SEAL KIT	FKM SEAL KIT
1	1	39011030	SEAL, CROWN, 1-1/16x1-1/4x5/32	X	39V11030
2	1	39011046	SEAL, BEVEL W/HEEL INSERT, 7/8 x 1/8 x 1 1/8	X	39V11046
3	1	39053000	WIPER, SNAP-IN, (7/8)	X	X
4	1	47511300	PLUNGER, SC, 11.6 kN		
5	1	81531301	RETAINER, SC, 2600		
6	1	39T55003	GASKET, (-124)		
N/A	N/A	46250202	KIT, SEAL, CYL, PP, TB, DA, 27.1KN	NOTED	N/A
N/A	N/A	6V250205	KIT, SEAL, CYL, PP, TB, DA, 27.1KN, FKM	N/A	NOTED




Lubricate all seals with clean hydraulic fluid prior to assembly

Install with lip side facing bottom of body

Body - Not Replaceable

Torque to 18 Nm (13 FT-LBS)

PARTS LIST	 VEKTEK, INC. 1334 E. SIXTH AVE. P.O. BOX 625 EMPORIA, KS. 66801 U.S.A.
	ASSEMBLIES AFFECTED 42-5021-31
PARTS LIST, ASSY, CYL, PP, TB, 27.1KN	SIZE A MPL2113
REV C	SHEET 1 OF 1

C	5877	RELEASE	JDW	01/23/26
REV	IN ACCORDANCE WITH ECN	EFFECTIVE DATE	REVISED BY	DATE
DRW BY: MAJ	DRAWING STATUS: Released			
DATE: 5-8-17	PRODUCTION APPROVED FOR RELEASED STATUS ONLY			